



# POWERWHITE LV LINEAR MODULES



## FEATURES / BENEFITS

- ▲ Fully modular linear arrays of ultra high brightness LEDs
- ▲ Utilizes the latest 80+ lumen LUXEON® Rebel™ LEDs for cool white, 70+ lumen for neutral white & 50+ lumen for warm white
- ▲ Onboard 350mA constant current driver runs off low voltage input
- ▲ ETL recognized to UL2108 standards
- ▲ Choice of color temperatures & optical patterns
- ▲ >70% lumen maintenance @ 50,000 hours at max acceptable ambient temperature
- ▲ Primary heatsinking included
- ▲ Color binned for consistent color

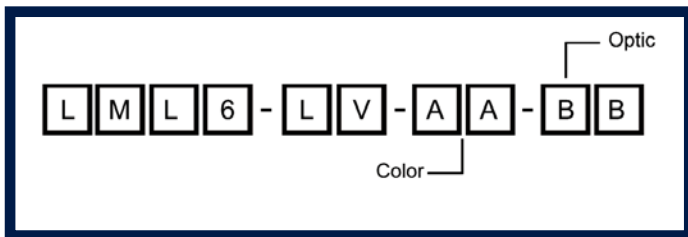
## OPERATING CONDITIONS

- ▲ Operating Ambient temperature -30°C to +55°C
- ▲ Onboard driver model operates off 14-24VDC / 11-17VAC input
- ▲ Max modules per run = 10 @ 12VAC input
- ▲ Typical power consumption 8.0W per module
- ▲ Additional heatsinking required for optimal performance
- ▲ Current draw 580mA @ 12VDC input  
290mA @ 24VDC input

## APPLICATION

- ▲ Linear lighting
- ▲ Accent lighting
- ▲ Flood lighting
- ▲ Street & area lighting
- ▲ General illumination

## ORDERING INFORMATION



## MATERIALS / FINISH

- ▲ Six premium LUXEON Rebel LEDs per module
- ▲ Anodized cast aluminum heatsink
- ▲ Dialight-Lumidrives optics
- ▲ Modular quick connect cables (sold separately)
- ▲ Onboard 350mA constant current driver

Color (AA)
<b>CW</b> = Min 80 lumen 'v bin' Cool white 5300K
<b>NW</b> = Min 70 lumen 's bin' Neutral white 3950K
<b>WW</b> = Min 50 lumen 'n bin' Warm white 2950K

*Optic (BB)
<b>SP</b> = 5 degree spot
<b>MD</b> = 8 degree spot
<b>WD</b> = 20 degree wide
<b>OV</b> = 5X25 degree oval
<b>FR</b> = 7 degree frosted spot

Connectors (sold separately)
<b>LML6-LV-CON-CAB</b> = Entry cable, power supply to 1st module
<b>LML6-LV-M2M-CAB</b> = Connection cable (module to module)
<small>* Cables use AWG 20 wires</small>

\*All angles are half divergence

### Dialight-Lumidrives Ltd.

York House • Wetherby Road • Long Marston, York, YO26 7NH  
Tel: +44(0) 1904 739150 • Fax: +44(0) 1904 737926 • www.dialight.com



### Dialight Corporation

1501 Route 34 South • Farmingdale, NJ 07727 USA  
Tel: (1) 732-919-3119 • Fax: (1) 732-751-5778 • www.dialight.com



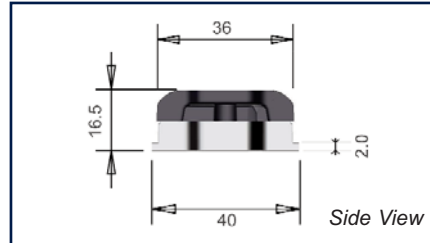
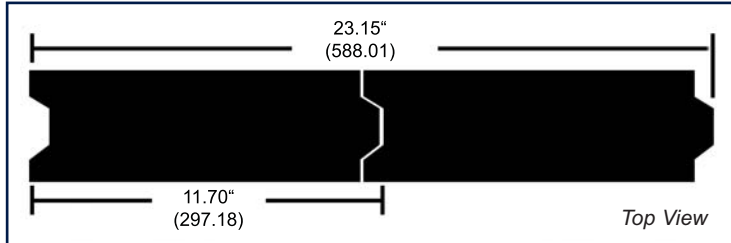
MDEXLUMPWMLV\_A

## MECHANICAL DIMENSIONS

11.7" x 1.498" x 0.585"  
(297.18mm x 38.05mm x 14.86mm)

Mounting hole spacing = 3.22" [81.8mm].  
Max screw size #8

Total length for "Z" units connected end to end =  
 $(Z \times 11.7) - ((Z-1) \times 0.25)$  (inches)  
 $(Z \times 297.2) - ((Z-1) \times 6.35)$  (mm)



Example: 2 units total length = 23.15" [588.01]

## ASSEMBLY INFORMATION



1) Remove cover from module (**Do not remove mask**)

2) Connect **LML6-LV-M2M-CAB** quick connect cables between modules as indicated in the photo. If desired, insert 8/32 or M6 mounting screws in holes provided.

3) Wire between cables may be routed through end as indicated in photo or around side of module.

4) Connect **LML6-LV-CON-CAB** into front of first module.

5) Replace cover.

6) Connect leads on **LML6-LV-CON-CAB** to low voltage power supply. Red wire to +, black wire to -

## PHOTOMETRIC DATA

IES 32 files available, consult factory

Dialight reserves the right to make changes at any time in order to supply the best product possible.

### Dialight-Lumidrives Ltd.

York House • Wetherby Road • Long Marston, York, YO26 7NH  
Tel: +44(0) 1904 739150 • Fax: +44(0) 1904 737926 • www.dialight.com



### Dialight Corporation

1501 Route 34 South • Farmingdale, NJ 07727 USA  
Tel: (1) 732-919-3119 • Fax: (1) 732-751-5778 • www.dialight.com



MDEXLUMPWMLV\_A